

Technical Information

Alternator

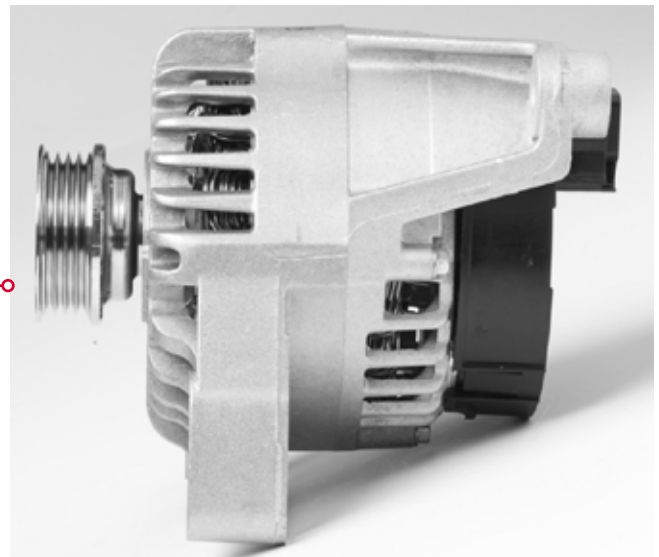
Addressing water leak issues on alternator

In this product bulletin, you will find information about the cause of alternator failure, advice on how to identify symptoms, as well as corrective actions.

Applicable product

All alternators for Fiat Grande Punto – Punto Evo and Alfa Mito (up to MY2010) with Petrol Engines. Mainly DAN998 for Fiat Grande Punto, RHD vehicles

DAN998



Symptom

Alternator failure identified by noisy front bearing caused by water contamination.

Deeper analysis upon disassembling the part highlighted traces of water ingress in the bearing, this in turn has caused grease deterioration. The bearing rotation under poor lubrication and corrosion has caused fatigue, and resulted in premature failure of the bearing.



Cause

Water is introduced through the bulkhead of the engine bay (simulating water runoff from the wipers or collected whilst parked in rainy conditions)

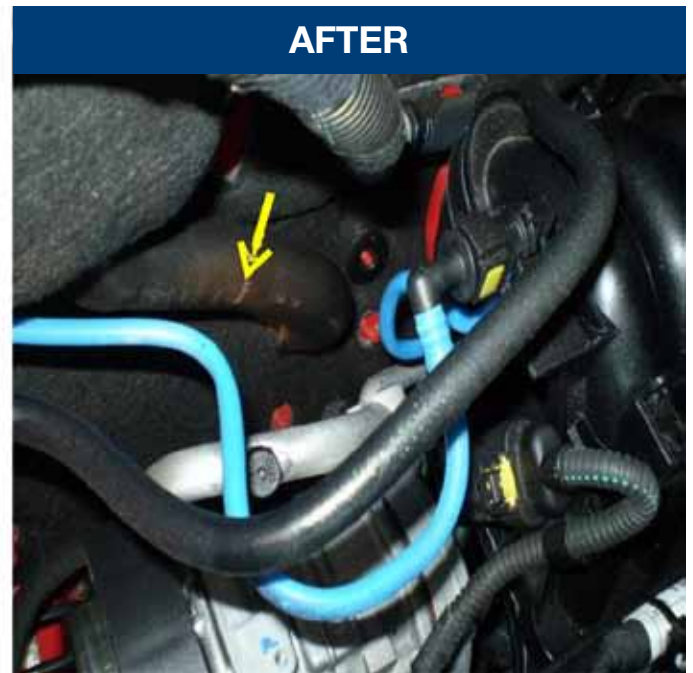
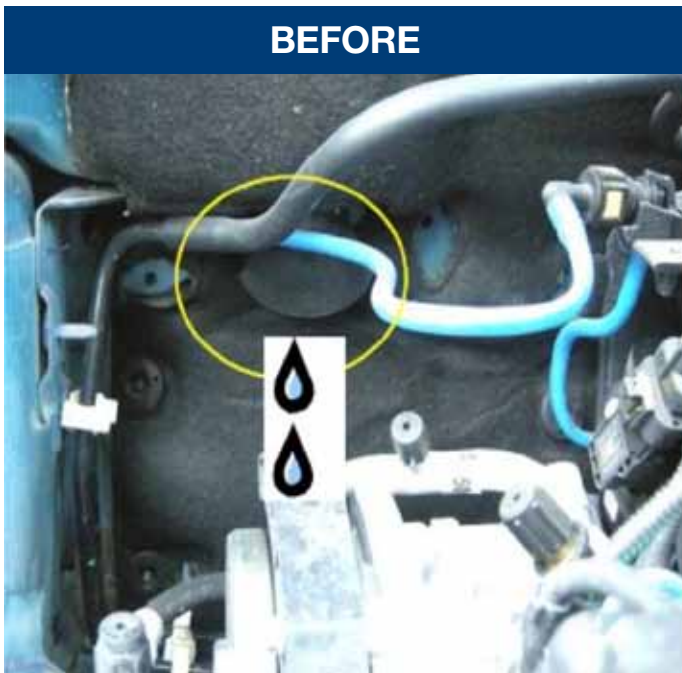


The windshield water drain hose is located directly above the drive belt and alternator pulley. This means that water is directly dropping onto the alternator front end. Water can then spill into any gaps between the pulley and housing, especially in static conditions. This in turn creates water stagnation and also frost. Over time this increases the chances of excessive water ingress in the alternator bearings, resulting in overall failure.

Corrective Actions

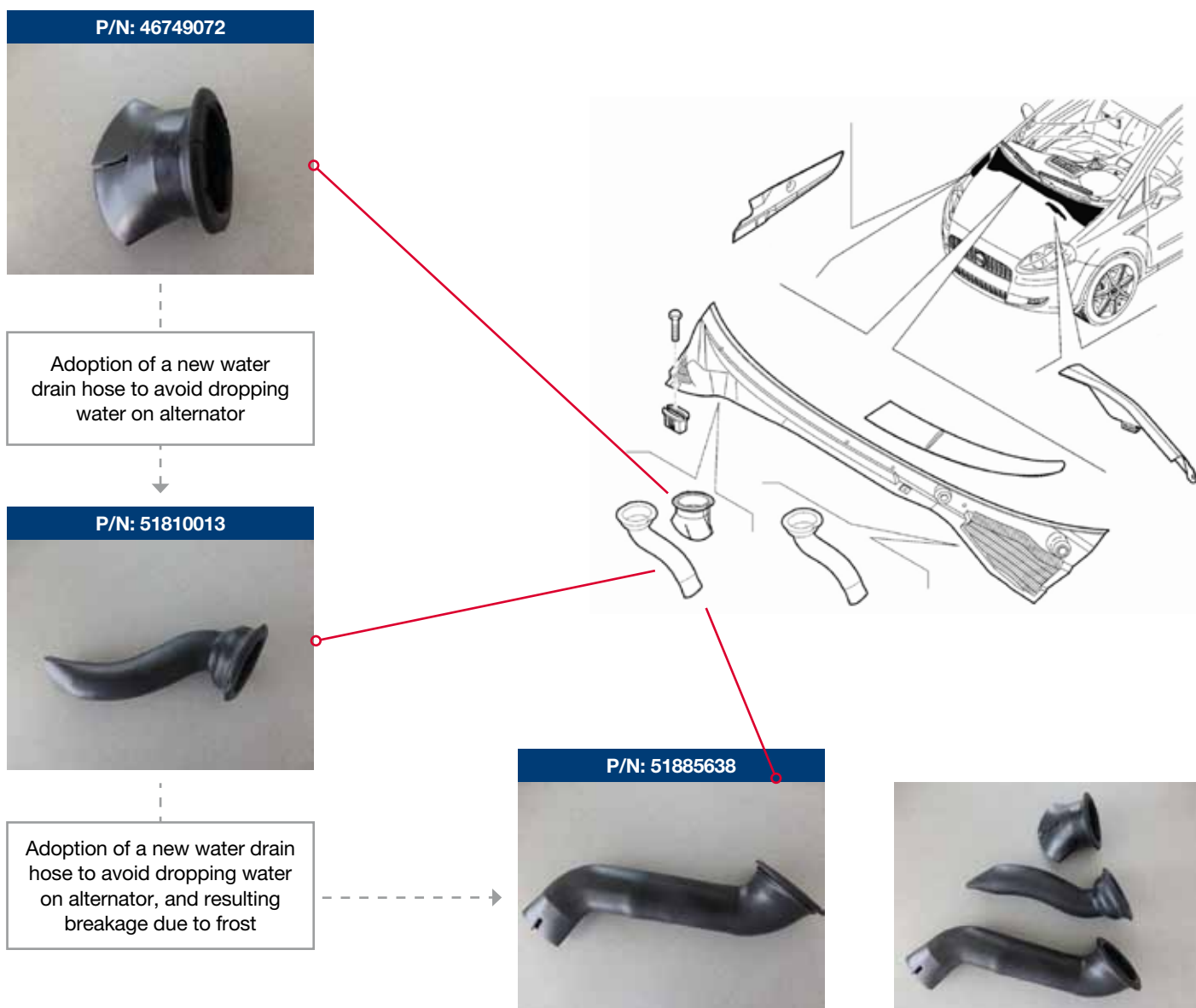
Adoption of a new water drain hose to avoid continued water droppage onto the alternator.

1. Increase the length of the existing water drain hose to ensure that it is no longer directly above, or resting on, the alternator.



2. Replace the small water drain hose with the longer hose similar to the one located in the other draining hole of the bulkhead.

Required Fiat Parts and Part Numbers are listed below. After replacement, make sure that the new water drain hose is no longer directed above, or resting on, the alternator.



DENSO EUROPE B.V.

Hogeweyselaan 165 | 1382 JL Weesp | The Netherlands
 Tel. +31 (0)294 - 493 493 | Fax. +31 (0)294 - 417 122